

D.I.Y Solar Inserts Fitting Instructions

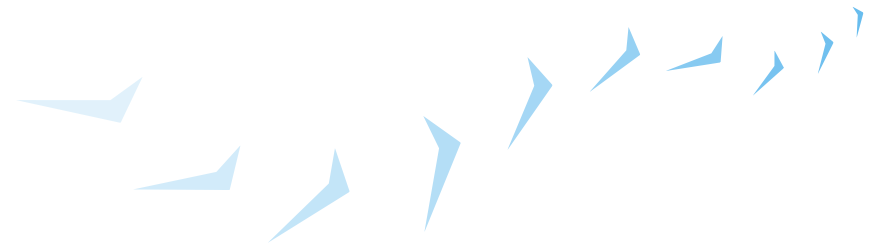


Copyright © 2008 Tec-Sun Limited. Unit B Park Farm, Colchester Road, Elmstead, Essex CO7 7BA
office: 01206 822100 email: info@tec-sun.co.uk web: www.tec-sun.co.uk

tec-sun[®]

DO IT YOURSELF

SOLAR INSERTS FITTING INSTRUCTIONS



Introduction

The following items are the basic tools you will need to complete your installation:

Starter Kit Containing

- Hole punch
- Insertion rod
- Silicone spray & Breather Tape
- Ladder
- Snap-off Knife or Stanley Knife
- Screw drivers
- Rolls of Smart Poly Solar Inserts
- Window cleaners pouch or a large pocket on clothing

Additional tools may be required depending on the conservatory roof type. Please read advanced installer tips for non-standard roofs.

INSTALLATION GUIDE

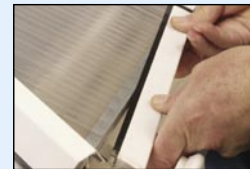
STEP 1

Arrange a comfortable working height about level with the gutter. Remove any End Caps that may be slotted or screwed on.



STEP 2

If there is a plastic 'U' shaped drip edge fitted remove by pulling with hands. If drip edges are fitted with silicone they may need gently levering off with a large flat headed screwdriver.



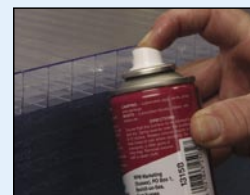
STEP 3

If there is breather tape fitted, peel off and clean off the edges of polycarbonate so that new breather tape can be fitted later.



STEP 4

To ease the fitting of the inserts spray silicone inside the top cells of polycarbonate at a time. The amount of spray required varies with the length of run and should evaporate to leave no residue.



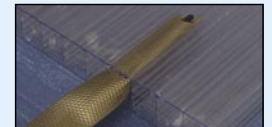
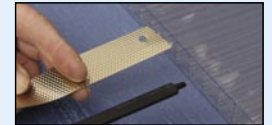
STEP 5

Place a reel of insert material into a window cleaners pouch or into a large pocket around hip height, so that it is below the height of the polycarbonate and in line with the channel to be inserted. Using insert material straight from the reel, punch a central hole at the end of the insert.



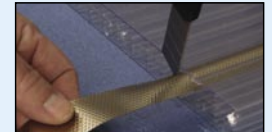
STEP 6

Push the end of the rod through the hole, with the insert on top of the insertion rod, embossed side facing upwards (bumpy side up). Slide the insert up the top cavity keeping pressure on the fitting rod until it reaches the end of the cavity. Ensure the entire insert forms an arc with finger and thumb to achieve a good finish.



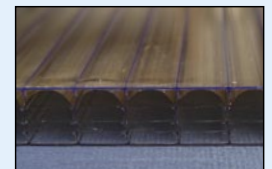
STEP 7

Remove rod and cut insert flush with polycarbonate.



STEP 8

Check all cavities have been filled correctly from inside the conservatory.



STEP 9

When all the inserts have been fitted, refit breather tape.



STEP 10

Replace 'U' Channel and End Cap

